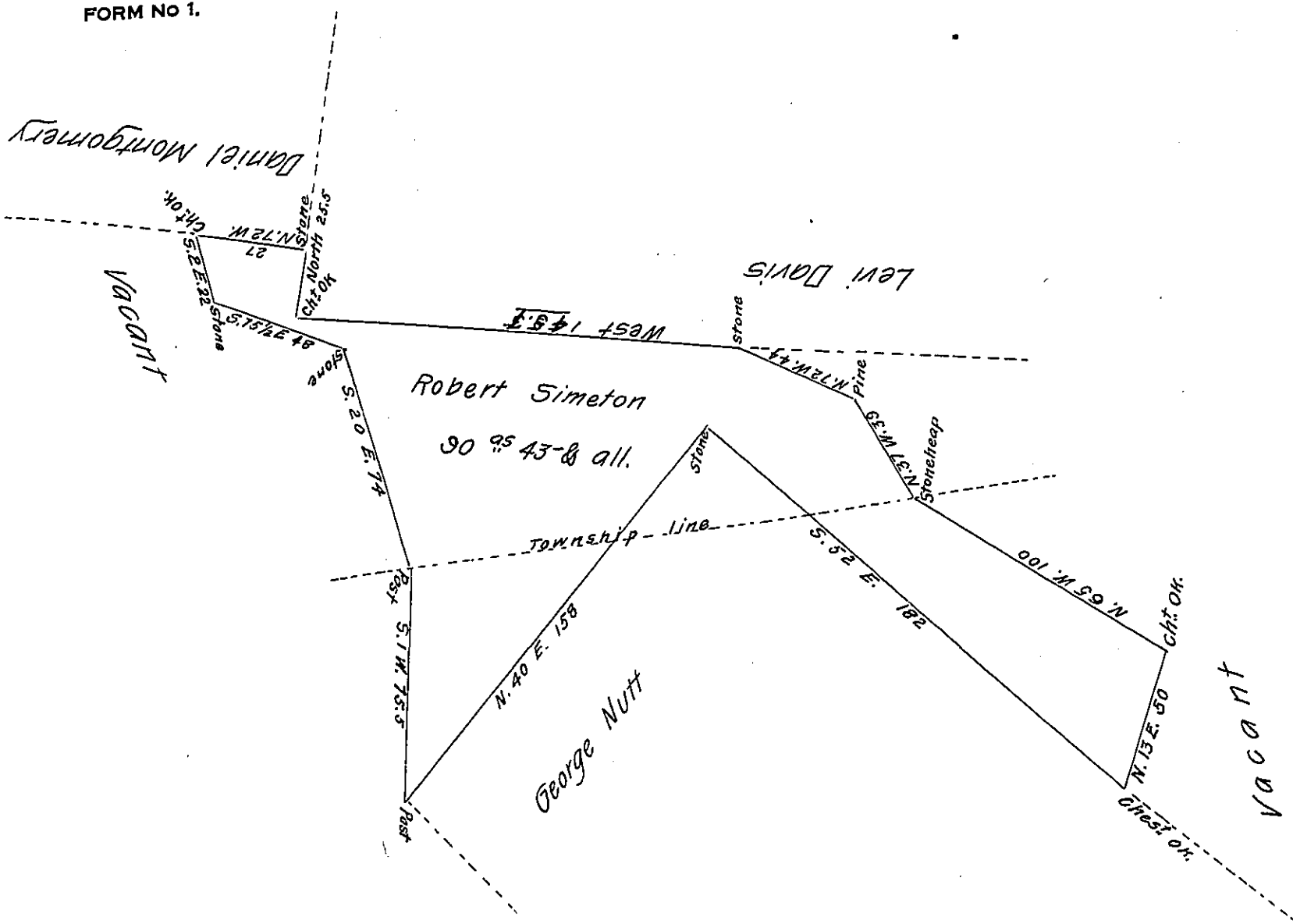


FORM NO 1.



Situate in Point & Chillisquage Townships North^d County Cont^d
 90^{as} 43- & all. Surveyed the 15 day of April 1816 unto Robert Simeton
 on Warrant dated the 1st of March 1816

To Rich^d T. Leech Esquire } Jacob Rockefeller D.S.
 Surveyor General }

IN TESTIMONY that the above is a copy of the original remaining on file in
 the Department of Internal Affairs of Pennsylvania, made
 conformably to an Act of Assembly approved the 16th day of
 February, 1833, I have hereunto set my Hand and caused
 the Seal of said Department to be affixed at Harrisburg,
 this thirteenth day of February 1908.

Henry Howell
 Secretary of Internal Affairs.